

**North of Tyne, Gateshead and North Cumbria Urinary  
Catheter Care Product Formulary 2023**

Developed in conjunction with:

North East and North Cumbria Integrated Care Board (ICB)  
Newcastle upon Tyne Hospitals NHS Foundation Trust  
Gateshead Health NHS Foundation Trust  
Northumbria Health Care NHS Foundation Trust  
North Cumbria Integrated care NHS Foundation Trust

Version 7

Implemented: 01/2024/2023 Review date: 10/2026

Contents	Page number
<b>Introduction</b>	3
<b>Urinary catheters</b> Long term 5 Open ended 6 Tiemann Tipped 7 Insertion gel 7 <b>Collection systems</b> 8 Leg bags 8 Non-drainage night bags 8 Catheter valves 9 <b>Accessories</b> 11 Leg bag holder/support 11 Fixation Device 11 <b>Intermittent catheters</b> 13 <b>Equipment</b> 15 Insertion packs 16 Catheter maintenance 16 Infusion Kit 16	
Appendix 1 ISC Sets	17
Appendix 2 CMS Protocol	18
Link: Manufacturers	19
Link :NHS Electronic drug tariff	19

# Continence formulary for urethral catheters, urine drainage systems and related products

## **Introduction**

The purpose of the evidence-based continence formulary for urinary catheters, urine drainage systems and related products is to provide clinical staff with information relating to continence products recommended for use within primary care Northeast and North Cumbria integrated care board (ICB), Newcastle upon Tyne Hospitals NHS Foundation Trust, Northumbria Healthcare NHS Foundation Trust, Gateshead NHS Foundation Trust and North Cumbria NHS Foundation Trust.

The formulary should be used alongside other Trust continence standards and guidelines.

For further information and advice on product choice, please contact the Nurse Consultant Continence Care, Specialist Nurse Continence (Community Lead/s), Urology Specialist Nurse Teams or the Supplies and Procurement Department/s.

## **Aims of the Formulary:**

- To safeguard the interest of the patient
- To ensure that there is a variety of products available to manage patient need
- To ensure that practitioners have adequate information to support their practice when choosing continence appliances
- To promote rational prescribing and sustainability issues
- To promote cost effective use of a product

## **Guidelines on Urinary Catheters**

- Careful patient assessment is essential before deciding to insert a urinary catheter because of the high risks of infection associated with a urinary catheter.
- Choice of product depends upon patient assessment and diagnosis, history of previous product use and local guidelines.
- To avoid catheter problems a patient history catheter record should be documented, and the patient should receive a catheter passport.
- In **acute care** standard length urinary catheters are used. The female catheters should be clearly labelled and kept separately from the standard-length catheters **Note: Appropriate labels and**

**posters must be displayed if female catheters are used, they can be obtained through Clinical Governance.**

- Catheters for intermittent self-catheterisation are usually prescribed following advice from the Urogynaecology /Urological department / Specialist Continence Service or General Practitioners.

The formulary will be due for review in 2026 subject to any external directives e.g., Nationally Contracted Products

## **URETHRAL CATHETERS**

**Note: All urinary catheters must be stored in their original box and not stored separately**

### **Long term urethral and supra pubic catheters**

Long term catheters can be used for a maximum period of 12 weeks. Patients should be assessed individually for the need to be catheterised and subsequently assessed for the optimum time for catheter change and catheter removal. Alternative management options should be considered first in view of complications associated with long term catheterisation.

It is important that the correct size catheter is prescribed for the individual. Except where clinical circumstances dictate, no more than a size 14ch should be used. A standard-length catheter should be used unless clinically indicated. **Female length catheters can be used in the patient's own home.**

**IN SECONDARY CARE Note: Appropriate labels and posters must be displayed if female catheters are used, they can be obtained through Clinical Governance.**

- For suprapubic catheterisation, no less than a size 16ch catheter should be used and a standard-length catheter should be used.

**IN PRIMARY CARE Note: UC should be:**

- Packaged in single units.
- Prescribed x 3 initially but only 2 to be added to repeat prescription
- Reviewed if the patient has more than 6 catheters in a year

## Long Term urethral and supra pubic catheters

### Male/Standard Length:

Name	Balloon size	Size	Prescription Code	NHSSC Code
Clinisupplies Prosys All Silicone	10mls	12ch-18ch	PCF12M10-PCF18M10	FUR000 – 12FG FUQ099 – 14FG FUQ100 – 16FG FUQ101 – 18FG FUQ102 – 20FG FUQ103 – 22FG FUQ104 – 24FG
Rüsch Brillant AquaFlate All-Silicone	10mls	12ch-24ch	DA310112 - DA310124	FSS172 – 12FG FSS173 – 14FG FSS174 – 16FG FSS176 – 18FG FSS177 – 20FG FST698 – 22FG
Coloplast Folsyl X-Tra prefilled syringe All Silicone	10mls	12ch-22ch	AA8A12 - AA8A22	FST033 – 12FG FST034 – 14FG FST039 – 16FG FST043 – 18FG FST044 – 20FG
Coloplast All Silicone	10mls	12ch-22ch	AA7112 – AA7122	FSS1044 – 12FG FSS1045 – 14FG FSS1046 – 16FG FSS1047 – 18FG FSS1048 – 20FG FSS1049 – 22FG
BD Biocath Lubrisil Aquafil prefilled syringe All Silicone		12ch-22ch	D175812-22E	FSS925 – 12FG FSS926 – 14FG FSS927 – 16FG FSS932 – 18FG FSS935 – 20FG FSS940 – 22FG
Flexicare All Silicone	10mls	12ch-26ch	00-411205D - 00-412605C	COMMUNITY ONLY
Mediplus All Silicone prefilled syringe	5-10mls	12ch-18ch	5772 - 5778	COMMUNITY ONLY
LINC All Silicone prefilled syringe	5mls	12ch-14ch	08501205W - 08501405W	COMMUNITY ONLY
LINC All Silicone prefilled syringe	10mls	16ch-18ch	08501610W - 08501810W	COMMUNITY ONLY

### Female Length:

Name	Balloon size	Size	Prescription Code	NHSSC Code
Proslys All-Silicone Foley Catheter	10mls	12ch-18ch	PCF12F10-PCF18F10	COMMUNITY ONLY
Teleflex Brilliant Plus Aquafate All Silicone pre filled syringe	10mls	12ch-24ch	A210112 - A210124	COMMUNITY ONLY
Coloplast Folsyl X-Tra prefilled syringe All Silicone	10mls	12ch-18ch	AA8512 - AA8518	COMMUNITY ONLY
BD Biocath Lubrisil Aquafil prefilled syringe All Silicone	10mls	12ch-16ch	176112EUK - D176116E	COMMUNITY ONLY
Coloplast All Silicone		12ch-16ch	AA7512 - AA7516	COMMUNITY ONLY
Flexicare All Silicone	10mls	12ch-16ch	00-421205C - 00-421605C	COMMUNITY ONLY
BARD All Silicone	10mls	12ch-16ch	166112UK – 166116UK	COMMUNITY ONLY
Flexicare All Silicone prefilled syringe	10mls	12ch-16ch	01-121205C - 01-21605C	COMMUNITY ONLY
LINC All Silicone prefilled syringe	5mls	12ch-14ch	085012051W - 085014051W	COMMUNITY ONLY
LINC All Silicone prefilled syringe	10mls	16ch	085016101W	COMMUNITY ONLY
Mediplus All Silicone pre filled syringe	5-10mls	12ch-16ch	5782-5786	COMMUNITY ONLY

### Tiemann Tip urinary catheters

Name	Balloon size	Size	Prescription Code	NHSSC Code
Teleflex Brilliant Plus Aquafate All Silicone prefilled syringe	10mls	12ch-22ch	850084-000	COMMUNITY ONLY
LINC All Silicone prefilled syringe	5-10mls	12ch-16ch	1011UB12 - 1011UB18	COMMUNITY ONLY

## Open ended catheters

These catheters are licensed for long term use and are available as an alternative for those patients experiencing problems with sediment blockage and urinary infection. The catheter differs, as the tip is open ended allowing additional drainage.

Name	Balloon size	Size	Prescription Code	NHSSC Code
<b>Suprapubic or Urethral use</b>				
Clinisupplies Prosys All Silicone OPEN ENDED	10mls	12ch-18ch	PCF12M-10E- PCF18M-10E	NOT NHSSC (DIRECT ONLY)
Mediplus All Silicone prefilled syringe OPEN ENDED	5-10mls	14ch-18ch	5777, 5779, 5775	NOT NHSSC (DIRECT ONLY)
<b>Suprapubic use Only</b>				
LINC All Silicone prefilled syringe	10mls	16ch-18ch	08451610H	FSR180 - 12FG FSR181 – 14FG FSR182 – 16FG
<b>Urethral use Only</b>				
Coloplast Folsyl X-tra prefilled syringe All Silicone OPEN ENDED	10mls	12ch-18ch	AA8C12 - AA8C18	FST033 – 12FG FST034 – 14FG FST039 – 16FG FST043 – 18FG FST044 – 20FG
Coloplast All Silicone OPEN ENDED	10mls	12ch-18ch	AA7412 – AA7418	CHECK CODE PLEASE PENDING

## Urinary Catheterisation Gel

### Lidocaine Gel

This device is to be used when carrying out urethral or suprapubic catheterisation; please follow manufacturer's instructions and risk assess each patient for potential allergic reaction to the Lidocaine in the product.

Product	Prescription code	NHSSC Code	Size	Unit of Issue
CliniMed Instillagel for female and supra pubic catheterisation	40-006	MRB338	6mls	10
CliniMed Instillagel For male catheterisation	40-011	MRB337	11mls	10

## Plain Lubricating Gel: without Active Ingredients

Use for patients with a known allergy to Lidocaine 2%

Product	Suppliers code	NHSSC Code	Size	Unit of Issue
Optimum Medical Optilube Sterile Lubricating Jelly <b>for female and supra pubic catheterisation</b>	1125	FST650	6mls	1
Optimum Medical Optilube Sterile Lubricating Jelly <b>For male catheterisation</b>	1126	FST882	11mls	1

## Collection Systems

**Leg bags** - The sterile bags listed below are suitable for the collection of urine from urinary catheters or penile sheath systems. Leg bags are designed for daytime use and vary in sizes and can be worn in different positions (hip, thigh, knee, calf). For patients wearing trousers consider a long tube and for female patients a direct inlet tube should be chosen. The bags should be changed approximately every 5-7 days. Please note that for penile sheath systems the leg bag does not have to be sterile.

Leg Bag	Prescription Code	NHSSC Code	Unit of Issue
Prosys-LT Lever Tap Short tube	PH500S-LT	FSE236	10
Prosys -LT Lever tap long tube	PH500L-LT?	FSE237	10
Prosys Short Tube	PH500S+	GDF055	10
Prosys Long tube	PH500L+	FUW085	10
BD Spirit10cm Short tube	DSL500S	NOT NHSSC (ORDER DIRECT)	10
BD Spirit30 Long tube	DSL500L	NOT NHSSC (ORDER DIRECT)	10
Ugo leg bags Lever Tap Short	1H/500/ST/L	FUV85004	10
Ugo leg bags Lever Tap Long	2H/500/LT/L	FSE250	10
Ugo leg bags T Tap Short	3H/500/ST/T	NOT NHSSC (ORDER DIRECT)	10
Ugo leg bags T Tap Long	4H/500/LT/T	FUV85005	10



**Sterile Night Drainage bag** - The sterile bags listed below are suitable for the collection of urine from urinary catheters. Night bags are designed for use day and night. The bag should be changed approximately every 5-7 days. Once the bag is disconnected from the urinary catheter it must be disposed of as per waste management policy.

Product	Prescription code	NHSSC Code	Size
Prosys sterile 90cm night bag	P2000	NOT NHSSC – ORDER DIRECT	2LT
BD Spirit sterile drainable night bag	DSBB20000	NOT NHSSC – ORDER DIRECT	2LT
Ugo12 90cm night bag	400-8512	NOT NHSSC – ORDER DIRECT – CODE IS 12/S/D/L	2LT

**Non-Sterile Night Drainage bag** – The drainage bags can be connected to a leg bag for overnight drainage. Single use 2 litre drainage bag, once the bag is disconnected from the urinary catheter it must be disposed of as per waste management policy.

Product	Prescription Code	NHSSC Code	Unit of Issue
Prosys Non-Sterile	PSU2	NOT NHSSC (ORDER DIRECT)	30
BD Spirit Non-Sterile	DSP1MT30	NOT NHSSC (ORDER DIRECT)	30
Ugo 10	400-8496	NOT NHSSC DIRECT CODE 10/NS/SU/DO	10

## Catheter Valves

### **Urethral catheter valves: USE WITH CAUTION**

Catheter valves can be used as an alternative to a leg bag; however, the patient or carer must be aware of how to use the product correctly to prevent overfilling of the bladder.

It is recommended to change the catheter valve every 5-7 days.

Contra-indications:

- urethral catheter valves are not recommended for patients catheterised due to incontinence caused by urgency or small bladder capacity.
- reduced bladder sensation.
- must not be used for patient's post-radical prostatectomy.
- renal impairment or ureteric reflux

- cognitive impairment
- patients unable to operate the valve.
- patients who are at risk of autonomic dysreflexia

<b>CATHETER VALVES</b>	<b>Unit of issue</b>	<b>Prescription Code</b>	<b>NHSSC Code</b>
CliniSupplies Ltd S Prosys	5	PCV3942	FSS1042
Teleflex S Teleflex Catheter Valve	1	850560-000000	FSV019
Flexicare Medical Ltd S E-Z Flow	5	00-0060	FSS1152
Bard Ltd S Flip-Flo	5	BFF5	FSS1041
Coloplast Ltd S Coloplast	10	CV3808	FSS1030
Jade- Euro-Med Ltd S Euro	5	JECV	NOT NHSSC (ORDER DIRECT)
Optimum Medical Solutions S Ugo	5	3000	NOT NHSSC (ORDER DIRECT)
Great Bear Healthcare Ltd S Libra Lever	5	10540A	NOT NHSSC (ORDER DIRECT)
LINC Medical Systems Ltd S Care-Flo	5	CF1	NOT NHSSC (ORDER DIRECT)

## **BELLY BAG ONLY AVAILABLE WITHIN PRIMARY CARE ONLY**

**Only use after discussion with the specialist nurse for continence or Urology**

- Should be changed every 28 days.
- An option for patients for whom leg bags and catheter valves are not an option.
- Not recommended if catheter blocks more often than every 4 weeks.
- Not recommended for patients who require a larger capacity than 1 litre overnight **Rusch (Teleflex) Belly Bag Collection system.**

<b>Product</b>	<b>Prescription code</b>	<b>Unit of issue</b>
Teleflex Medical, waist suspension drainage Bag 1000mls	B1000 (GDW502)	1
1000mls with 60 cm outlet tubing	B1000CT – NOT NHSSC	1
1000mls with sample port	B1000P – NOT NHSSC	1

## Accessories

### Leg bag holder/support

Used as an alternative to leg straps to secure a urine drainage bag to the patient's leg. They hold the drainage bag more securely, thus preventing traction along the urethra. The sleeve has an opening for the tap for ease of emptying. The patient's leg should be measured to ensure the correct fit.

Clinisupplies	Prescription Code	NHSSC Code	Unit of Issue
Prosys leg bag Sleeve Small 24-40cm	PLS3881	FST851	4
Prosys leg bag Sleeve Medium 36-50cm	PLS3904	FST852	4
Prosys leg bag Sleeve Large 40-65cm	PLS3928	FST853	4

Linc Medical			
Leg Bag Sleeve Small 24-39cm	ME350-750S S	NOT NHSSC	4
Leg Bag Sleeve Medium 36-55cm	ME350-750S M	NOT NHSSC	4
Leg Bag Sleeve Large 40-70cm	ME350-750S L	NOT NHSSC	4
Leg Bag Sleeve X Large 65-95cm	ME350-750S XL	NOT NHSSC	4
Leg Bag Sleeve XX Large 75-105cm	ME350-750S XXL	FNU044	4

BD			
Urisleeve Small 24-36cm	150111	GDW035	4
Urisleeve Medium 36-55cm	150121	GDW036	4
Urisleeve Large 40-70cm	150131	GDW040	4
Urisleeve X Large 65-95cm	150141	GDW041	4

## Catheter Fixation Device

### Reusable Strap

All patients MUST use a catheter fixation device, the catheter retaining strap is designed as a re-usable strap.

The strap secures the catheter minimising the risk of urethral trauma, expulsion and bypassing.

**Note: Reusable fixation must be first line choice for all patients.**

Product	Prescription code	NHSSC Code	Unit of issue
<b>Clinisupplies</b>			5
Short	PCS40	FUX093	
Adult	PCS50	FUX076	
Abdominal	PCS85	FUX095	

<b>Clinimed</b> Adult Long	CSRS60 CSRS100	NOT NHSSC NOT NHSSC	5
<b>Optimum Medical</b> X Short 35cm Short 45cm Medium 80cm Large 130cm X Large 180cm	3001 3002 3003 3009 3010	FUB85000 FSS1068 FSS1069 FUB85002 FUB85001	5

## Adhesive Fixation Device

Catheter retaining adhesive device: When considering use of a urinary catheter fixation/securing device, the healthcare professional must assess the individual patient to determine which device is most suitable to use. The strap type of device should not be used if the patient has circulation/vascular problems. The adhesive type device should not be used if the patient has a known allergy to adhesive or if the patient has friable skin, as the device may cause skin damage.

Product	Prescription code	NHSSC Code	Unit of issue
<b>Clinimed</b> Clinifix 110mmx25mm	40-310	ELW831	10
Clinifix 140mmx40mm	40-410	ELW832	10
<b>Optimum Medical</b> Ugo Multifix Gentle Small Ugo Multifix Gentle Large Ugo Fix Gentle catheter clip	3031 3030 3004	FSS1139 3030 NOT NHSSC FSS1084	5
<b>Imedicare</b> Cath Grip Small Medium Large	Not available on FP10	51250NSNA 51301NSNA 51300NSNA	4

## Intermittent catheters (IC)

IC products only for use within Newcastle Hospitals NHS Foundation Trust, and Gateshead NHS Foundation Trust, Northumbria Healthcare NHS Foundation Trust and North Cumbria NHS Foundation Trust

IC may be a short or long term intervention. It has been identified as the optimal treatment for people who have urinary retention or incomplete emptying of the bladder. IC avoids the need for other bulky external appliances such as drainage bags, increases self-confidence and freedom to express sexuality for people. Intermittent catheters are single use items. Please follow manufacturer instructions. The intermittent catheters are latex free.

**Please note: The number of ISC required is specific to each patient and is guided by the health Care Professional who is assessing and educating the patient.**

### Female length IC

FEMALE LENGTH ISC	Prescription Code	NHSSC Code
<b>GREEN LIST</b>		
Bbraun Actreen Mini Cath	228008E-228016E Ch 8-16	FST845 – 10FG FST1033 – 12FG FST727 – 14FG
Hollister Infyna Chic <b>Use for patients who work / travel / go out of the house</b>	7008 - 7014 Ch 8-14	NOT NHSSC (ORDER DIRECT)
Clinimed Curan Advantage Female	WHF08-WHF16 Ch 8-16	NOT NHSSC (ORDER DIRECT)
<b>AMBER LIST</b>		
Bbraun Actreen Hi lite Female <b>Use if Actreen mini too short</b>	238306E-238316E Ch 6-16	FST828 – 10FG FST829 – 12FG FST830 – 14FG FST831 – 16FG
Wellspect Lofric Insti-Cath 20cm	4080825 - 4081425 Ch 8-14	FUE299 – 10FG FUE300 – 12FG FUE301 – 14FG
Wellspect Lofric Sense 15cm	4160825 - 416125 Ch 8-14	FST372 – 8FG FST373 – 10FG FST374 – 12FG FST375 – 14FG
<b>BLUE LIST Use if IC not being carried out by the patient</b>		
BD Ready to use Hydrophilic catheter Female	RTU10F-RTU14F Ch 10-14	FST85001 – 10FG FST85002 – 12FG FST85011 – 14FG
<b>PINK LIST Use if patient has repeated UTI</b>		
Convatec GentleCath Glide for female	421570-421574 Ch 8-16	NOT NHSSC (ORDER DIRECT)
<b>SETS: Use for initial training then swap to normal ISC after 4 weeks</b>		
Bbraun Actreen mini set	239010- 239014 Ch 10-14	FST1039 – 12FG OTHER SIZES NOT NHSSC

Hollister Infyna Plus ready to use set	86081 - 86141 Ch 8-14	NOT NHSSC (ORDER DIRECT)
Wellspect Lofric sense Hydro-kit 20cm	42308253 - 42318253 Ch 8-18	FST1051 – 12FG FST920 – 14FG

### Standard length IC

STANDARD LENGTH ISC	Prescription Code	NHSSC Code
<b>GREEN LIST</b>		
Wellspect Lofric Origo (Male)	4420825 - 4421825 Ch 8-18	FST790 – 12FG OTHER SIZES NOT NHSSC
Teleflex Liquick Base Male	630108-630114 Ch 8-14	FST1018 – 8FG FST1027 – 10FG FST1022 – 12FG FST1024 – 14FG
Bbraun Actreen HiLite Male	228208E - 228218E Ch 8-18	NOT NHSSC (ORDER DIRECT)
Peak Medical ultra–Smooth Aqua	USD4012-USD4018 Ch 12-18	CHECK CODES
<b>AMBER LIST</b>		
Bbraun Actreen Lite Cath	24210E - 242218E Ch 10-18	NOT NHSSC (ORDER DIRECT)
Clinisupplies Sensacath hydrophilic	AQUAS10 - AQUAS18 Ch 10-18	NOT NHSSC (ORDER DIRECT)
<b>BLUE LIST Use if IC not being carried out by the patient</b>		
BD Ready to use Hydrophilic catheter Male	RTU12M - RTU16M Ch 12-16	FST85005 – 12FG FST85009 – 14FG FST85007 – 16FG
<b>PINK LIST Use if patient has repeated UTI</b>		
Convatec Gentlecath Glide for men	421564-421569 Ch 8-18	NOT NHSSC (ORDER DIRECT)
<b>SETS: Use for initial training then swap to normal ISC after 4 weeks See Appendix 1</b>		
Wellspect Lofric sense Hydro-kit 40cm	42008253-42018253 Ch 8-18	FST1049 – 12FG FST922 – 16FG FST1050 – 18FG OTHER SIZES NOT NHSSC

## Tiemann Tipped IC

TIEMANN TIP ISC	Prescription Code	NHSSC Code
<b>Use specific ISC to the ISC use with a Nealon tip</b>		
Bbraun Actreen Lite Cath (Male Olive Tip Tiemann)	228108E-228118E Ch 10-18	NOT NHSSC (ORDER DIRECT)
Teleflex Liquick Base (Tiemann Tip)	631012-631016 Ch 12-16	NOT NHSSC (ORDER DIRECT)
Wellspect Lofric Origo Tiemann Tip	4441025 - 4441825 Ch 10-18	FST803 – 10FG FST804 – 12FG
Bbraun Actreen Hi-Lite Tiemann	228108E -228118E Ch 8-18	NOT NHSSC (ORDER DIRECT)
Clinisupplies Sensacath male Tiemann	AQUAT10- AQUAT18 Ch 10-18	NOT NHSSC (ORDER DIRECT)
WyCath H20 Tiemann	W2TM10-W2TM16 Ch 10-16	NOT NHSSC (ORDER DIRECT)
Convatec Gentlecath Glide for men	421907-421912 Ch 8-18	
<b>BLUE LIST Use if IC not being carried out by the patient</b>		
BD Ready to use Hydrophilic catheter Male RTU12C Coude	RTU12C - RTU16C Ch 12-16	FST85008 – 12FG FST85006 – 14FG FST85003 – 16FG

### Community: Catheter insertion and removal packs

Single use for each re-catheterisation procedure.

Product	Prescription code	Size	Unit of issue
Richardson Healthcare Cath-It	908410 – EHC522	S/M Gloves	1
	908420 – EHC523	M/L Gloves	
	908430 – EHC524	L/XL Gloves	

### Catheter removal packs for Trial Without Catheter (TWOC)

Single use for TWOC removal packs only order via NHS supplies.

Product	NHS Supplies code	Size	Unit of issue
Richardson Healthcare Cath-It	908412 – EHC528	S/M Gloves M/L Gloves L/XL Gloves	1

## Catheter Maintenance Solution

The frequency of administration is dependent upon individual patient needs following a patient assessment by the registered nurse, midwife, or medical practitioner. The Trust regime must be followed as per guidelines.

Product	Suppliers code	Size	Unit of Issue
BD OptifloS 0.9% Saline	CSS50	50ml	1
B.Braun Uro-tainer Twin Citric acid 3.23% G Solution Used only if encrustation is evident	9746609 – NOT NHSSC	2x30ml	1
B.Braun Uro-tainer Twin Citric acid 6.00% R Solution Used only if encrustation is evident	9746625 – FST872	2x30ml	1

**Rationale:** Cost effective. Two sequential instillations of 30mls are more effective than a single instillation with either 50 or 100mls.

## **Bladder infusion Kit**

This device is to be used when using CMS regime (Appendix 2) and using CMS more than once weekly to ensure closed system is not breached.

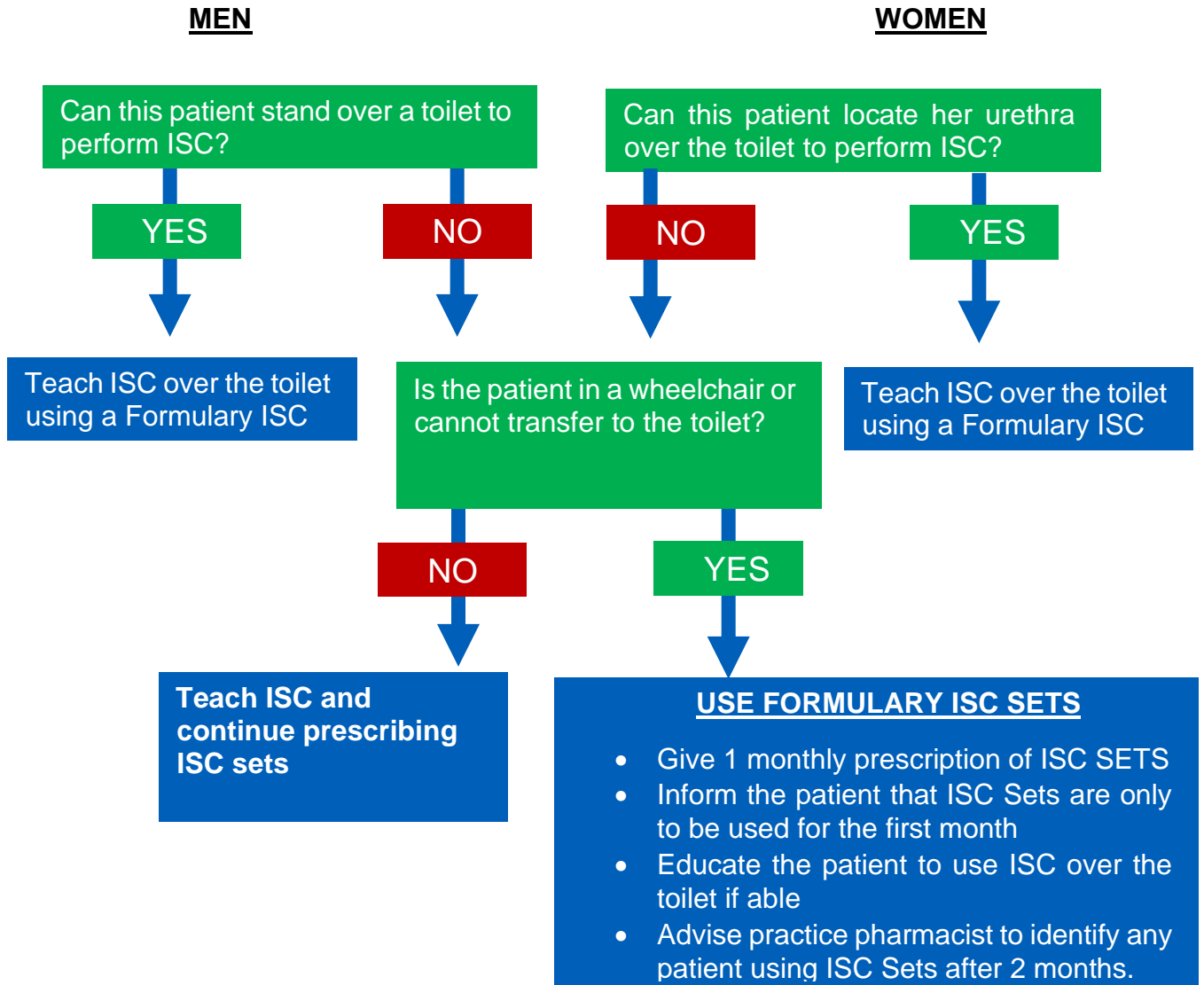
Product	Prescription Code	Unit of Issue
L.I.N.C Medical Bladder infusion Kit	MCI/701 – FST1054	10



## Criteria for Prescribing Intermittent Self catheterisation (ISC) Sets

### within Newcastle upon Tyne

ISC Sets should only be used in the initial teaching of patients who fit the relevant criteria, the overall aim should always be to encourage where possible the patient to perform ISC over the toilet and not to use an ISC Set.



## Protocol for long term use of CMS in the community

When encrustation presents in a patient with a Suprapubic or Urethral catheter, initially. Citric acid 3.20.3% should be administered 3 times weekly for a period of 2 weeks, then 2 times weekly for 2 weeks. This should be reduced to once weekly with the change of catheter bag.

1. CMS infusion kits are advocated when patients are using this regime (see catheter formulary)
2. The CMS care plan should be used at all times.
3. If Citric acid 3.20.3% is ineffective, Citric acid 6% should be administered following the same procedure.
4. **If this is still ineffective stop all CMS. Seek advice from Newcastle specialist continence service or urology/urogynaecology/GP.**

### **NUTH Secondary care CMS link**

<http://policies.app/launchtext.asp?LaunchIt=3000>

### **NUTH Primary care CMS Link**

<http://nuth-intranet/cms/Portals/0/Continence/Urinary%20CMS%20Community%202023.pdf>

## LINKS

### NHS

[NHS Electronic Drug Tariff \(nhsbsa.nhs.uk\)](https://nhsbsa.nhs.uk)

[Welcome - NHS Supply Chain Online Catalogue](#)

### Manufacturers

BBraun [B. Braun Medical Ltd](#)

Wellspect [Wellspect HealthCare](#)

LINC medical [linc-medical](#)

Manfred Sauer UK [Manfred Sauer UK](#)

Richardson Healthcare [Richardson Healthcare](#)

Clinimed [CliniMed](#)

Clinisupplies [CliniSupplies](#)

Convatec [convatec](#)

Teleflex [Teleflex](#)

Optimum Medical [Home - Optimum Medical](#)

**Coloplast** [Coloplast UK | Developing products and services that make life easier for people with intimate healthcare needs](#)

**Hollister** [Hollister Incorporated UK | Ostomy, Continence, Wound & Critical Care | Hollister UK](#)

